



iowa total care[™]



Stakeholder Advisory Board

June 7, 2023

Why we're in business

OUR PURPOSE

Transforming the health of the community, one person at a time

What we do

OUR MISSION

Better health outcomes at lower costs

What we represent

OUR PILLARS



Focus on the Individual



Whole Health



Active Local Involvement

What drives our activity

OUR BELIEFS

We believe healthier individuals create more vibrant families and communities.

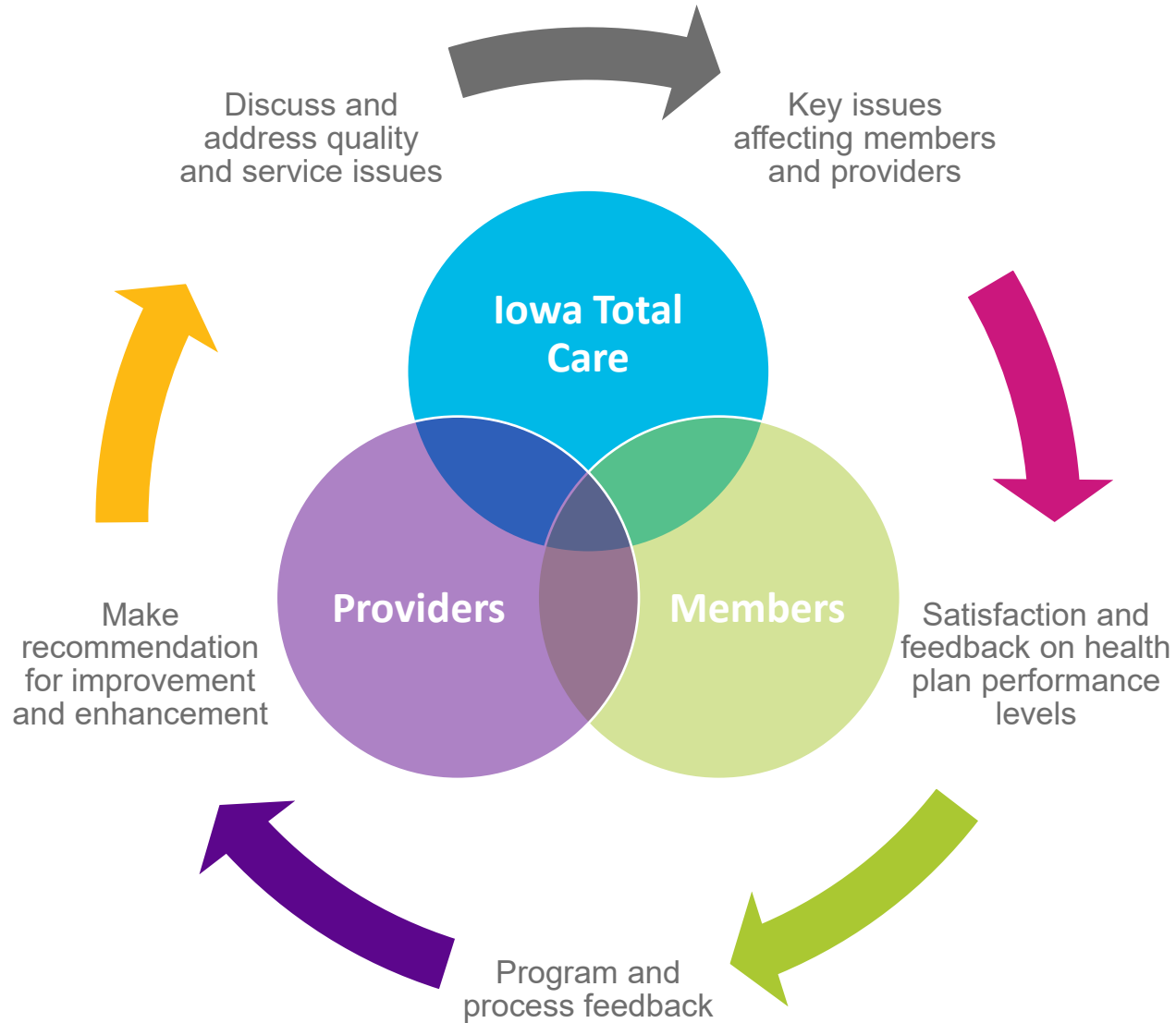
We believe treating people with kindness, respect and dignity empowers healthy decisions.

We believe we have a responsibility to remove barriers and make it simple to get well, stay well, and be well.

We believe in treating the whole person, not just the physical body.

We believe local partnerships enable meaningful, accessible healthcare.

SAB Purpose



Agenda

- Welcome – Introductions
- Iowa Medicaid Town Halls
- You Said, We Did
- 2023 ITC on the Go
- Survey Questions
- Iowa Total Care Focus – Child Wellness
- Health Equity
- Open Discussion
- Closing and Future Meetings

Iowa Medicaid Town Halls



Iowa Medicaid holds monthly virtual town hall meetings with providers and members to:

- Gather feedback on the current state of the program.
- Ways to improve the program.
- Share information on current and future program projects and improvements.

Schedule:

- 2nd Thursday of the month (members only).
- 4th Thursday of the month (providers and members).

Upcoming Meetings*:

- Thursday, June 15th – Member Town Hall.
- Thursday, June 29th – Member & Provider Town Hall.
- Thursday, July 13th – Member Town Hall.

How do I sign up?

- [Iowa Medicaid Town Halls](#)

hhs.iowa.gov/ime/about/advisory-groups/townhall

- Need help? Contact Iowa Medicaid Member Services at **1-800-338-8366**

These are virtual meetings, but there is a call-in option for those unable to stream live video.

*Future regularly scheduled meetings will be posted on the website and is updated by Iowa Medicaid.

You Said, We Did

Dental Benefits (hhs.iowa.gov/dental-wellness-plan)

Iowa Total Care only covers dental procedures done in a hospital setting. Through the Dental Wellness Plans available through Iowa Medicaid, members have access to diagnostic and preventative dental services (exams, cleanings, x-rays, fluoride); fillings for cavities and more.

Iowa Medicaid and Hawki Members enrolled in the Dental Wellness Plan or Dental Wellness Plan Kids



Member Services Phone: 1-888-472-2793



Member Services Phone: 1-855-247-6262

www.iowatotalcare.com/members/medicaid/health-wellness/dental-care.html

You Said, We Did

Vision Benefits

Frequently Asked Questions



SERVICES	IA HEALTH LINK	IA HEALTH & WELLNESS PLAN - IA WELLNESS PLAN	HAWKI
Exams	Covered 1 complete preventive eye exam every 12 months	Covered 1 complete preventive eye exam every 12 months	Covered 1 complete preventive eye exam every 12 months
Eyewear	Covered Age 1 and under: up to 3 pairs of eyeglasses every 12 months, up to 16 gas permeable contact lenses every 12 months Age 1-3: up to 4 pairs of eyeglasses every 12 months, up to 8 gas permeable contact lenses every 12 months Age 4-7: 1 pair of eyeglasses every 12 months, up to 6 gas permeable contact lenses every 12 months Age 8 and over: 1 pair of eyeglasses every 24 months, 2 gas permeable contact lenses every 24 months	Covered Age 19 and 20 only: 1 pair of eyeglasses (frames and lenses) every 24 months	Covered \$100 retail allowance toward eyeglasses and contact lenses every 12 months
Repairs	Covered Age 20 and under: replacement for eyeglasses lost or damaged beyond repair is not limited. Age 21 and over: replacement for eyeglasses lost or damaged beyond repair is limited to once every 12 months.	Covered Age 19 and 20 only: replacement for eyeglasses lost or damaged beyond repair is not limited.	Not Covered

Update Your Contact Information

How to Renew

When COVID-19 first began, there was a rule put in place to make sure all Iowa Medicaid members received healthcare coverage, no matter if they were eligible for the program or not. This rule is known as Continuous Coverage Requirement. Starting April 1, 2023, this rule will be ending. This means you will go through a review process to see if you qualify for Iowa Medicaid coverage.

As an Iowa Medicaid member, you can expect to receive mail from Iowa Medicaid soon. If you receive a request for information, be sure you respond in a timely fashion.

Make sure your address, phone number and email contact information are up to date.

For more information on the review process, visit:

[Iowa Department of Health & Human Services | Unwind: The End of the Continuous Coverage Requirement](#)

To Update Your Contact Information

Contact Iowa Total Care Member Services at 1-833-404-1061.

For Questions About Your Renewals

Contact Iowa HHS at 1-855-889-7985.

ITC on the Go



Eating Healthy with Iowa Total Care

Check out the latest cooking videos on the [Be Well. Eat Well](https://www.iowatotalcare.com/bewelleatwell) webpage.

([iowatotalcare.com/bewelleatwell](https://www.iowatotalcare.com/bewelleatwell))

- White Chicken Chili
- Hawaiian Panini
- Peanut Butter Energy Bites

Watch for free and/or download the recipe PDF.

ITC on the Go



GREEN TO GO

Brought to you by: **iowa total care.**

Free Community Health Fair

YOU'RE INVITED!

Date: Saturday, March 25, 2023
Time: 11 a.m.–3 p.m.
Place: Corinthian Baptist Church
814 School Street, Des Moines

**BE WELL
EAT WELL**

Be Well. Eat Well.
An Iowa Total Care Initiative

Scan for a list of community partners at the health fair.

JOIN US FOR:

- Helpful information on community & health resources—and more!
- Tips from a Hy-Vee dietician and free recipes!
- Fresh, free produce for the first 1,000 households (while supply lasts)!

Supporting Sponsors:

Produce provided by:

Green To Go Community Health Fairs

Des Moines (March 25)

- 1,000 free, fresh produce bags.
- 22+ Community Organizations.
- 40 Iowa Total Care volunteers.

Cedar Rapids (June 24)

- In partnership with Tanager Place.
- Location: Imagination Square free family event.



ITC on the Go



Volunteerism

At the center of Iowa Total Care's purpose is our commitment to addressing the needs of the communities we serve.

441 hours donated Year to Date.

- Dress for Success.
- Give Grace Give Hope.
- Central Iowa Shelter & Services (CISS).
- Camp Courageous.

Iowa Total Care Literacy Program



Iowa Total Care's Literacy Program

An Iowa Total Care initiative that promotes early childhood literacy through educational resources and statewide partnerships. Access educational tools and discover community organizations that help support literacy in Iowa's youth! Check out our [Iowa Total Care Literacy Program Brochure \(PDF\)](#) to learn more.

Doc's Kids Club

- Free to kids 10 and younger who live in Iowa
- New member welcome kit
- Monthly e-newsletter

Health Books for Kids & Teens

- Available in English & Spanish

Survey Questions



June Survey Questions

ITC Focus

Child Wellness

TeenTips

- The TeenTips Newsletter is produced at least 2x a year.
- The newsletter is provided in English and Spanish.
- Three Components
 - Main Article
 - Side Article
 - Anticipatory Guidance
 - Information provided explaining expected growth and development.
- Visit the [Annual Wellness Visits](http://iowatotalcare.com/members/medicaid/health-wellness/annual-wellness-visits) page to read the newsletter.
(iowatotalcare.com/members/medicaid/health-wellness/annual-wellness-visits)

FOR MEMBERS ▾

- Health & Wellness Topics ▾
 - How to Stop Smoking
 - Women's Health
 - When to Use the ER
 - Flu Prevention
 - Annual Well Visits** ▾
 - Child Well Visit
 - Teen Well Visit**
 - Adult Well Visit
 - Shots (Immunizations) ⊕
 - EPSDT (Early and Periodic Screening, Diagnostic and Treatment)

TeenTips: Newsletter Highlights

myStrength: Available 24/7, this can help teens learn how to deal with stress, anxiety, chronic pain, and more.

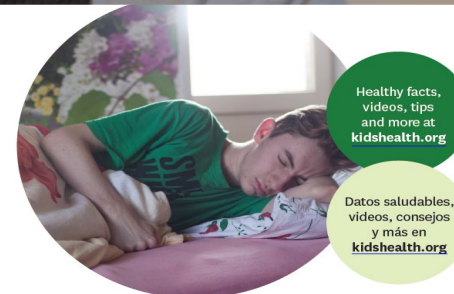
Did you know section:

- Offers language barrier assistance (also found on the back page).
- Directs teen on how to check for free transportation eligibility.

Kidshealth.org: offers information on a range of other topics for teens including:

- Body
- Mind
- Sexual Health
- Food & Fitness
- Diseases & Conditions
- Infections
- Drugs & Alcohol
- School & Jobs
- Sports
- Expert Answers (Q&A)
- Staying Safe
- Videos

TeenTips



Iowa Total Care complies with applicable Federal civil rights laws and does not discriminate on the basis of race, color, national origin, age, disability, or sex. | Iowa Total Care cumple con las leyes federales de derechos civiles aplicables y no discrimina en base a la raza, el color, el país de origen, la edad, la discapacidad y el sexo.

Language assistance services, auxiliary aids and services, larger font, oral translation, and other alternative formats are available to you at no cost. To obtain this, please call 1-833-404-1061 (TTY: 711). | Usted tiene a su disposición, sin costo alguno, servicios de asistencia de idiomas, ayudas y servicios auxiliares, materia impresa en letra más grande, traducción oral y otros formatos alternativos. Para obtener esto, llame al 1-833-404-1061 (TTY: 711). | 我们免费为您提供语言协助服务、辅助设施和服务、更大字体、口头翻译和其他替代格式。如需获取此服务，请致电 1-833-404-1061 (TTY: 711)。

TeenTips: Article Highlights



Issue 1

- Sports Physical vs. Well Child Visit
- How often should you visit your doctor?
- Sun Protection

Issue 2

- Loneliness Affects Your Health
- Cold, Flu or Covid?
- Hand Washing

Issue 3

- Prevent Teen Smoking
- Break Free From Tobacco
- Swim Smart

Issue 4

- Signs of Seasonal Affective Disorder (SAD)
- Suicidal Thoughts? There is Help.
- Fighting the Blues with Physical Activity

Issue 5

- You Are What You Eat
- Fighting Stress with Superfoods
- Flossing

Issue 6

- Your Brain on Sleep
- Do You Have Asthma?
- Needed Sleep by Age

Immunizations

Immunizations **protect** your child against diseases.

Examples: Polio, Influenza, Hepatitis, Whooping Cough, Measles.

Vaccines teach your body's immune system to recognize the virus or bacteria so you can **build up** your own immunity against that disease.

Childhood immunizations are covered by the Federal Vaccines For Children (VFC) program (available at doctor's offices and public health clinics).

Recommended vaccine schedule changes often, but the CDC (Centers for Disease Control and Prevention) always has updated information.



To find more information:

- Contact your child's primary care doctor.
- Contact your County Public Health Department.
- Visit [CDC.gov/Vaccines](https://www.cdc.gov/Vaccines)
- Call Iowa Total Care member services at

1-833-404-1061 (TTY: 711)

Table 1 Recommended Child and Adolescent Immunization Schedule for ages 18 years or younger, United States, 2023

These recommendations must be read with the notes that follow. For those who fall behind or start late, provide catch-up vaccination at the earliest opportunity as indicated by the green bars. To determine minimum intervals between doses, see the catch-up schedule (Table 2).

Vaccine	Birth	1 mo	2 mos	4 mos	6 mos	9 mos	12 mos	15 mos	18 mos	19-23 mos	2-3 yrs	4-6 yrs	7-10 yrs	11-12 yrs	13-15 yrs	16 yrs	17-18 yrs		
Hepatitis B (HepB)	1 st dose	← 2 nd dose →	← 3 rd dose →																
Rotavirus (RV): RV1 (3-dose series), RV2 (3-dose series)			1 st dose	2 nd dose	See Notes														
Diphtheria, tetanus, acellular pertussis (DTaP ≥ 7 yrs)			1 st dose	2 nd dose	3 rd dose	← 4 th dose →										5 th dose			
Haemophilus influenzae type b (Hib)			1 st dose	2 nd dose	See Notes		← 3 rd or 4 th dose →		See Notes										
Pneumococcal conjugate (PCV13, PCV15)			1 st dose	2 nd dose	← 4 th dose →														
Inactivated poliovirus (IPV < 18 yrs)			1 st dose	2 nd dose	← 3 rd dose →										4 th dose	See Notes			
COVID-19 (1 COVID-mRNA, 2 COVID-nRNA, 1 COVID-aPS)			2- or 3- dose primary series and booster (See Notes)																
Influenza (IV4)			Annual vaccination 1 or 2 doses																
Influenza (LAIV4)													Annual vaccination 1 or 2 doses	OT	Annual vaccination 1 dose only				
Measles, mumps, rubella (MMR)					See Notes		← 1 st dose →								2 nd dose				
Varicella (VAR)					← 1 st dose →												2 nd dose		
Hepatitis A (HepA)					See Notes										2-dose series, See Notes				
Tetanus, diphtheria, acellular pertussis (Tdap ≥ 7 yrs)																	1 dose		
Human papillomavirus (HPV)																	1 dose		
Meningococcal (MenACWY-D ≥ 9 mos, MenACWY-CDM ≥ 2 mos, MenACWY-T ≥ 2 years)					See Notes													1 st dose	2 nd dose
Meningococcal B (MenB-4C, MenB-FHbp)																	See Notes		
Pneumococcal polysaccharide (PPSV23)																	See Notes		
Dengue (DENACVD) 9-16 yrs)																	See Notes		

Range of recommended ages for all children
Range of recommended ages for catch-up vaccination
Range of recommended ages for certain high-risk groups
Recommended vaccination can begin in the age group
Recommended vaccination based on shared clinical decision-making
Seropositive in endemic dengue areas (See Notes)
No recommendation/ not applicable

Vaccine Spotlight

Tetanus toxoid

Summer is coming! Even if your children have had all their immunizations, an injury can mean a need to get a **tetanus** booster. A booster is an extra dose of a vaccine after an earlier shot. It provides a “boost” of protection for you.

Gardasil for Human Papillomavirus (HPV)

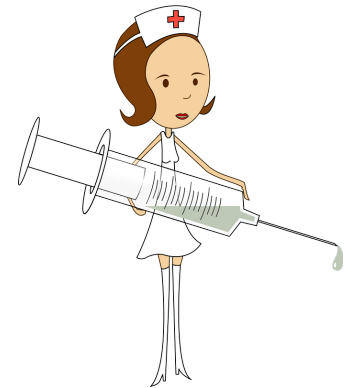
This vaccine, **Gardasil-9**, protects against 9 viruses that can cause cancer.

- HPV is a common virus that spreads easily.
- When a person gets infected with the virus, there is no way to know who will develop cancer or other health problems later in life.



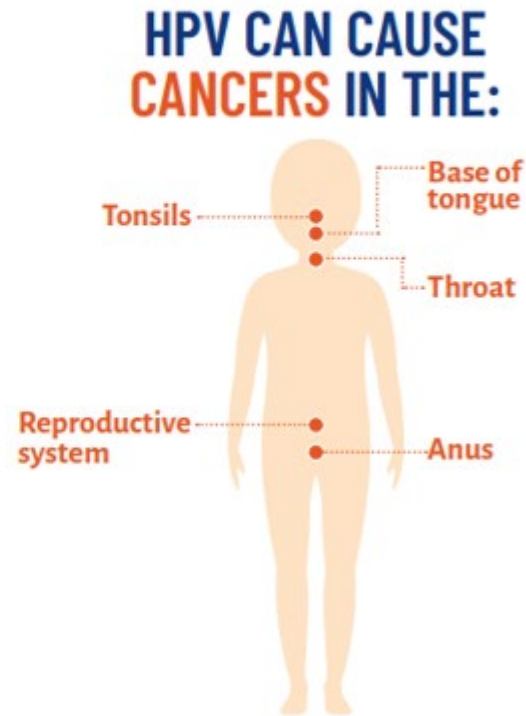
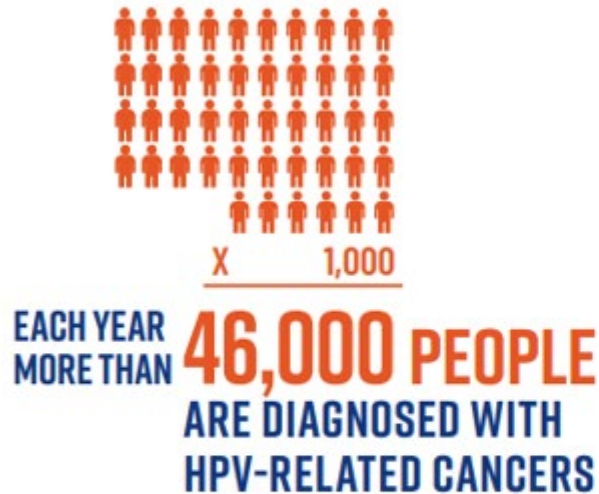
**VACCINATING KIDS AT
AGES 9–12 YEARS IS MOST EFFECTIVE
PRE-TEENS PRODUCE MORE ANTIBODIES AFTER HPV VACCINATION.**

MORE ANTIBODIES EQUALS MORE PROTECTION.



Human Papillomavirus Vaccine (HPV)

HPV IS MORE COMMON THAN YOU THINK



That is why your child or teen needs the HPV vaccine now—to protect against viruses that cause HPV-related cancers later.

Children Wellness Visits and Physicals

Regular checkups are an important way to keep track of your child's health and development. It is a chance to learn as much as you can about helping your child grow and thrive!

The Health providers will:

- Take measurements
 - Height, Weight, Blood Pressure, Hearing, Eye Test.
- Conduct a head-to-toe examination.
- Update immunizations.
- Answer questions.

What can you do:

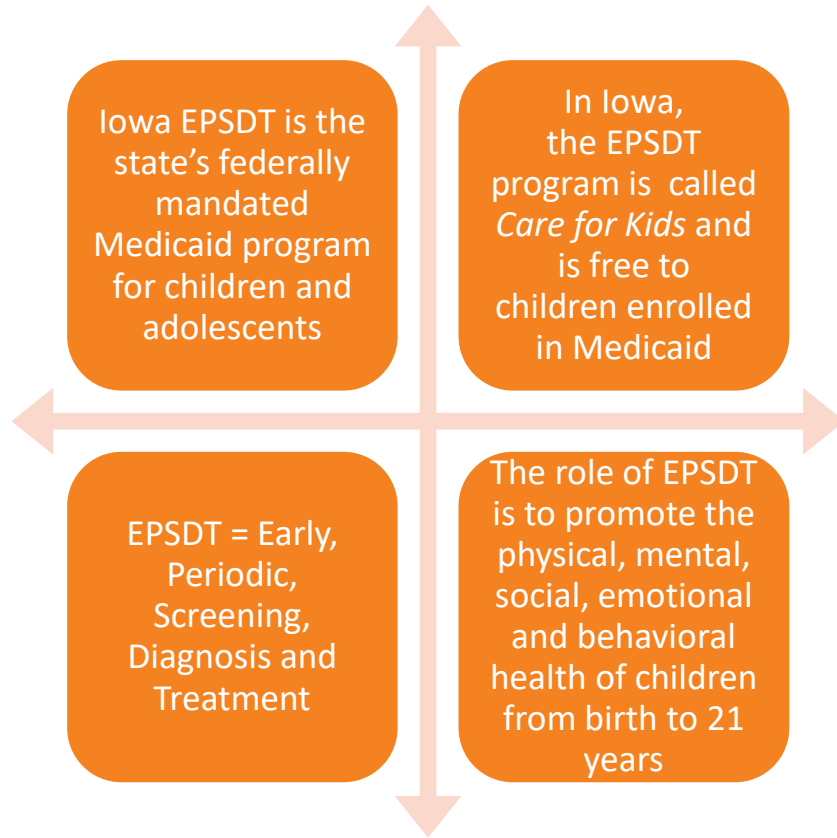
- Share successes and milestones
 - Started walking at 12 months.
 - Can name five colors.
 - Participates in music/art/sports at school.
- Share challenges in daily routines
 - Cries before going to school.
 - Isn't saying as many words as other playmates.
 - Can't sit up on their own.



Benefits of discussions with a doctor

- Encourages Independence
 - Play an active role in their own health.
- Builds a trusting, open relationship with their doctors.
- Discuss important health topics
 - Sexual and reproductive health
 - Sexually Transmitted Diseases and Birth Control
 - Drug, Alcohol and Tobacco Use
 - Mental Health and Emotional Well-Being.
 - Risk taking.
- Pediatricians and other clinicians can help support parents in:
 - Understanding the importance of confidential, one-on-one time.
 - Encouraging parents to talk to each other about behaviors that impact their physical and mental health.

Less than 50% of adolescents and even fewer young adults have had regular preventive visits.



EPSDT - The Acronym

E – Early

Children should receive quality healthcare as early as possible.

P – Periodic

Children should receive well-child visits at regular intervals.

S – Screening

Children should be screened for developmental, health and behavioral concerns.

D – Diagnosis

Children should receive further evaluation of health, developmental or social-emotional problems during well-child visits that may require treatment.

T – Treatment

Children should receive further evaluation of health, developmental or social-emotional problems identified during well-child visits that may require treatment.

Iowa Department of Human Services



		Infancy						Early Childhood				Mid. Childhood					Adolescence															
		New born	2-5 days	by 1 mo	2 mo	4 mo	6 mo	9 mo	12 mo	15 mo	18 mo	24 mo	30 mo	3 yr	4 yr	5 yr	6 yr	7 yr	8 yr	9 yr	10 yr	11 yr	12 yr	13 yr	14 yr	15 yr	16 yr	17 yr	18 yr	19 yr	20 yr	21 yr
History Initial/Interval		●	●	●	●	●	●	●	●	●	●	●	●	●	●	●	●	●	●	●	●	●	●	●	●	●	●	●	●	●	●	●
Physical Exam Well Visit		●	●	●	●	●	●	●	●	●	●	●	●	●	●	●	●	●	●	●	●	●	●	●	●	●	●	●	●	●	●	●
Measurements	Length/Height and Weight	●	●	●	●	●	●	●	●	●	●	●	●	●	●	●	●	●	●	●	●	●	●	●	●	●	●	●	●	●	●	
	Weight for Length	●	●	●	●	●	●	●	●	●	●	●	●	●	●	●	●	●	●	●	●	●	●	●	●	●	●	●	●	●	●	
	Body Mass Index	●	●	●	●	●	●	●	●	●	●	●	●	●	●	●	●	●	●	●	●	●	●	●	●	●	●	●	●	●	●	
	Head Circumference	●	●	●	●	●	●	●	●	●	●	●	●	●	●	●	●	●	●	●	●	●	●	●	●	●	●	●	●	●	●	
	Blood Pressure	○	○	○	○	○	○	○	○	○	○	○	○	○	○	○	○	○	○	○	○	○	○	○	○	○	○	○	○	○	○	
Sensory Screening	Vision	○	○	○	○	○	○	○	○	○	○	○	○	○	○	○	○	○	○	○	○	○	○	○	○	○	○	○	○	○	○	
	Hearing	●	●	●	●	●	●	●	●	●	●	●	●	●	●	●	●	●	●	●	●	●	●	●	●	●	●	●	●	●	●	
Oral Health	Screening and Risk Assessment	●	●	●	●	●	●	●	●	●	●	●	●	●	●	●	●	●	●	●	●	●	●	●	●	●	●	●	●	●	●	
	Fluoride/Varnish Applications	●	●	●	●	●	●	●	●	●	●	●	●	●	●	●	●	●	●	●	●	●	●	●	●	●	●	●	●	●	●	
Developmental and Behavioral Health	Caregiver Depression Screening	○	○	●	●	●	●	●	●	●	●	●	●	●	●	●	●	●	●	●	●	●	●	●	●	●	●	●	●	●	●	
	Developmental Surveillance	●	●	●	●	●	●	●	●	●	●	●	●	●	●	●	●	●	●	●	●	●	●	●	●	●	●	●	●	●	●	
	Developmental Screening							●			●	●	●	●	●	●	●	●	●	●	●	●	●	●	●	●	●	●	●	●	●	
	Autism Screening										●	●	●	●	●	●	●	●	●	●	●	●	●	●	●	●	●	●	●	●	●	●
	Psychosocial/Behavioral Assessment	●	●	●	●	●	●	●	●	●	●	●	●	●	●	●	●	●	●	●	●	●	●	●	●	●	●	●	●	●	●	●
	Tobacco, Alcohol and Drug Use Assessment																					○	○	○	○	○	○	○	○	○	○	
	Depression Screening																						●	●	●	●	●	●	●	●	●	
Anticipatory Guidance		●	●	●	●	●	●	●	●	●	●	●	●	●	●	●	●	●	●	●	●	●	●	●	●	●	●	●	●	●	●	
Nutrition/Obesity Prevention Assesses/Educate		●	●	●	●	●	●	●	●	●	●	●	●	●	●	●	●	●	●	●	●	●	●	●	●	●	●	●	●	●	●	
Procedures	Newborn Screening - blood, bilirubin, hearing, critical congenital heart disease	●	←	●	→																											
	Immunization	●	●	●	●	●	●	●	●	●	●	●	●	●	●	●	●	●	●	●	●	●	●	●	●	●	●	●	●	●	●	
	Hemoglobin/Anemia				○				○	○	○	○	○	○	○	○	○	○	○	○	○	○	○	○	○	○	○	○	○	○	○	
	Lead Testing						○	○	○	○	○	○	○	○	○	○	○	○	○	○	○	○	○	○	○	○	○	○	○	○	○	○
	Lipid Screening										○		○			○	○	○	○	○	○	○	○	○	○	○	○	○	○	○	○	
	STI Screening																						○	○	○	○	○	○	○	○	○	
	HIV Screening																						○	○	○	○	○	○	○	○	○	
	Hepatitis C Virus Infection																														○	
	Tuberculosis		○			○	○	○	○	○	○	○	○	○	○	○	○	○	○	○	○	○	○	○	○	○	○	○	○	○	○	○
	Cervical Dysplasia Screening																															●

(Rev. 3/21)

KEY: ● To be performed ○ Assess risk ←→ Screen at least once during time period indicated

When should children receive EPDST/Well Child Visit?

Babies grow fast and need a lot of EPDST exams! They need exams at


- 1 month
- 2 months
- 4 months
- 6 months
- 9 months
- 12 months

Toddlers need exams at


- 15 months
- 18 months
- 24 months
- 30 months


After 30 months, children need an EPDST/Well Child Visit yearly starting at age 3 up to age 21.

Healthy Habits for Babies Monthly Mailer

 Mailed monthly to babies turning two months old in current month.

 Over 750 mailings each month.

 > 50% of members complete Infant Well Care Visits within 6 weeks of mailer.

 > 70% of member complete Infant Well Care Visits within two months of mailer.



INFANT WELL CARE VISITS

Infant well care visits are a chance to focus on your child's wellness and growth.

What to expect at an Infant Well Care Visit:

- Talk about ways to keep your infant healthy.
- Measure your infant's growth and development.
- Get information on screenings. These include vision, hearing, and lead.
- Education on childhood illnesses and immunizations.

It is advised that children see a dentist for the first time at 1 year of age, then every 6 months after that.

How to earn up to \$20

Infant Well Care Visits are a part of our My Health Pays® Rewards Program. If your baby completes six well care visits by 15 months of age, they may qualify to earn \$20 in My Health Pays® Rewards.

Keeping track of your child's immunizations can be a challenge. Ask your child's provider at each well care visit if they are up-to-date.

It is recommended infant Well Care Visits occur at the following ages. These are the vaccines they will receive during this time.

Need help finding a doctor or scheduling a visit? Please call our Member Services Team at 1-833-404-1061 from 7:30 a.m. to 6:00 p.m. CST. They can also help you find a ride to your child's visit.

Healthy Habits for Babies Hábitos saludables para bebés

VISITAS DE ATENCIÓN PREVENTIVA DEL BEBÉ

Las visitas de atención preventiva de los bebés son una oportunidad para enfocarse en el bienestar y crecimiento de su niño.

Qué esperar en una visita de atención preventiva de bebé:

- Hablar sobre maneras de mantener su bebé sano.
- Medir el crecimiento y desarrollo de su bebé.
- Obtener información sobre evaluaciones. Entre ellas se incluyen la vista, el oído y el plomo.
- Educación sobre enfermedades y vacunaciones en la infancia.

Se aconseja que los niños vean a un dentista por primera vez cuando tienen 1 año y después cada 6 meses.

Cómo puede ganar hasta \$20

Las visitas de atención preventiva del bebé son parte del programa de recompensas My Health Pays®. Si su bebé completa las seis visitas de atención preventiva a los 15 meses de edad, estas pueden ser elegibles para ganar \$20 en recompensas de My Health Pays®.

El estar al día en todas las vacunas que tiene que recibir su niño(a) puede ser un reto. Pregúntele al proveedor de su niño(a) en cada una de las visitas preventivas si están al día.

Se recomienda que las Visitas de atención preventivas del bebé tengan lugar en las siguientes edades: Estas son las vacunas que recibirán en ese momento.

¿Necesita ayuda para encontrar un médico o programar una visita? Por favor llame a nuestro equipo de Servicios para los afiliados al 1-833-404-1061 de 7:30 a.m. a 6:00 p.m. CST. También le pueden ayudar a encontrar un medio de transporte para acudir a la visita de su niño.



Immunization Record Card

iowa total care Infant Well Care Visit/ Immunization Record				iowa total care Visita de atención preventiva del bebé/ Historial médico de vacunación			
Infant Well Care Visit	Recommended Vaccination	Date Given	Next Appt Date	Visita de atención preventiva del bebé	Vacunas recomendadas	Fecha de administración	Fecha de la siguiente cita
Birth	HepB			Fecha de nacimiento	HepB		
1 month	HepB			1 mes	HepB		
2 months	RV, DTap, Hib, PCV, IPV			2 meses	RV, DTap, Hib, PCV, IPV		
4 months	RV, DTap, Hib, PCV, IPV			4 meses	RV, DTap, Hib, PCV, IPV		
6 months	HepB, RV, DTap, Hib, PCV, IPV, Flu			6 meses	HepB, RV, DTap, Hib, PCV, IPV, Flu		
9 months				9 meses			
12 months	HepB, Hib, PCV, IPV, Flu, MMR, Varicella, HepA			12 meses	HepB, Hib, PCV, IPV, Flu, MMR, Varicella, HepA		
15 months	DTap			15 meses	DTap		
18 months				18 meses			
24 months				24 meses			
30 months				30 meses			
Age 3 (Annually)				3 años (Anualmente)			

\$20 Infant Well Care Visits

Must complete 6 visits with a PCP within 2-15 months age range to earn.

\$20 Early Child Well Care Visits

Must complete 2 visits with a PCP within the 15-30 months age range.

\$20 Annual Child Well Care Visits

Once a year for children 3-20 years of age.

Health Equity

Health Equity and Child Wellness

Health Equity is a way to make sure every child can have the highest and best level of health care as possible, no matter where they live or who they are.

Illnesses that begin in childhood can often follow children throughout their lives. If a child doesn't receive 'equitable' health care to treat issues such as autism, asthma, or hearing loss, they are much less likely to be healthy as adults.

'Equitable care' means being treated the same as everyone else no matter who you are, where you come from or live, what your income is, your cultural beliefs or race.



Health Equity

A family's lack of access to nutritious foods and resources, homelessness and language barriers can also have an impact on their child's health and wellness.

Iowa Total Care provides free language services for your family's medical appointments to include interpreters and translation for written materials.

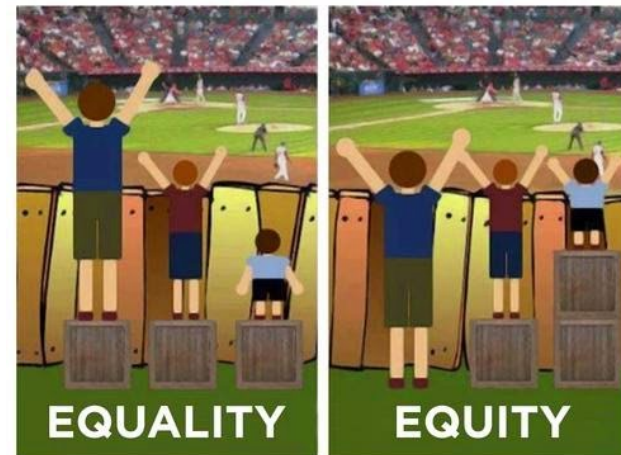
To make a request for interpretation you can either;

- Complete the [Language Access Services Request form](#).

(iowatotalcare.com/members/medicaid/resources/handbooks-forms)

- Call Member Services at **1-833-404-1061 (TTY: 711)**.

Please reach out to the Iowa Total Care Health Equity Specialists at [**C&L@iowatotalcare.com**](mailto:C&L@iowatotalcare.com) with any questions or concerns.



Open Discussion

Meeting Details

- Upcoming Meeting Dates:

<p>September 6, 2023</p> <ul style="list-style-type: none">• Agenda being finalized	<p>December 6, 2023</p> <ul style="list-style-type: none">• Agenda being finalized
<p>March 7, 2024</p> <ul style="list-style-type: none">• Agenda being finalized	<p>June 7, 2024</p> <ul style="list-style-type: none">• Agenda being finalized

- Phone Number: **1-833-404-1061 (TTY: 711)**